

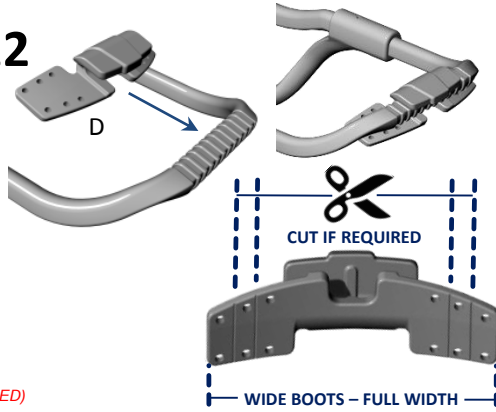
11



INSTALL CALF PAD & STRAP KIT
(INSTRUCTIONS IN THE BAG)

BRACE WIDTH CAN BE
ADJUSTED WIDER OR
NARROWER FOR BETTER LOOK
& FIT ON PATIENT SHOE.
(SEE THERMOFORMING GUIDELINE IF REQUIRED)

12



CUT IF REQUIRED

WIDE BOOTS - FULL WIDTH

13

- EASY FITTING SHOES FOR FIRST TRIAL - SNEAKERS - TENNIS SHOES -

ENOUGH EYELETS



WE RECOMMEND STABLE SHOES WITH FIRM
HEELCAP, ROBUST FABRIC AND FITTED WITH RIDGES
ON SOLE CONTOUR TO HOLD THE BRACE IN PLACE.

**AVOID MINIMALIST SHOES WITH VERY LIGHT
FABRIC AND THIN SOLE.**

ROBUST FABRIC

BULKY SOLE+RIDGES
FOR HEEL FRICTION GRIP

14



LOOK FOR EYELETS POSITION.

15



ASK PATIENT TO DON THE SHOE
& SELECT WIDTH FOR HOLES.

16



INSTALL TIE-WRAPS IN EYELETS.
NEVER ATTACH AROUND THE LACES!

17



LOCK BOTH TIE-WRAPS IN REAR
CORNERS OR BEST FIT POSITION.

18



TIGHTEN TIE-WRAPS AT MAXIMUM
VERY STRONG FIXATION IS IMPORTANT!
PULL FIRMLY ON LACE CLIP AND VALIDATE IT'S
SOLIDLY ANCHORED AND BONDED TO THE SHOE.

19

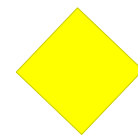


HOOK THE BRACE ON THE SHOE
AND YOU'RE READY FOR ACTION!
**SEE LACE CLIP FITTING LEAFLET
FOR MORE FOOTWEAR OPTIONS.**
*(VIDEOS TUTORIALS AVAILABLE
ON YOUTUBE & OUR WEBSITE)*



ASSEMBLY INSTRUCTIONS
XTERN SEMI-ASSEMBLED
ORTHOTIC KIT

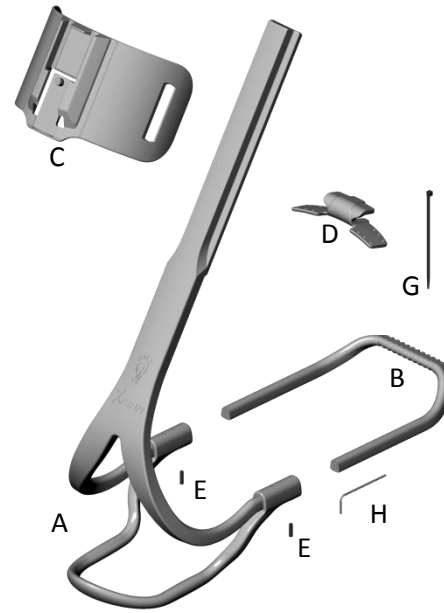
SIZE LARGE (100100-SA-L)
SHOE SIZE 10.5 US -> 16 US Men



SIZE MEDIUM (100100-SA-M)
SHOE SIZE 7.5 US -> 10.5 US Men



2019-09-17 - 100100-SA-ML XTERN



SUGGESTED TOOLS

- POWERED DRILL (VARIABLE SPEED)
- DRILL BIT 7/64" (2.8 MM)
- HEX ALLEN KEY 1/16" (INCLUDED)
- METAL HAND SAW
- MEASURING CALIPER 300MM OR MEASURING TAPE
- BENCH VISE WITH SOFT PAD JAW (PLASTIC / LEATHER)
- TRAUTMAN SANDER AND CARVER
- CUTTER PLIER
- HEAT GUN / HEAT SOURCE
MIN 250°F (120°C)
IF THERMOFORMING REQUIRED

PROTECTIVE SAFETY GEAR:

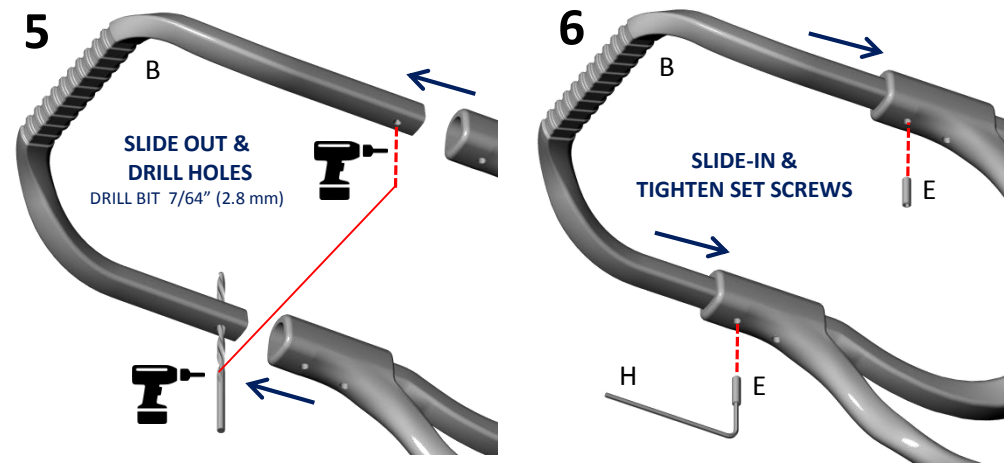
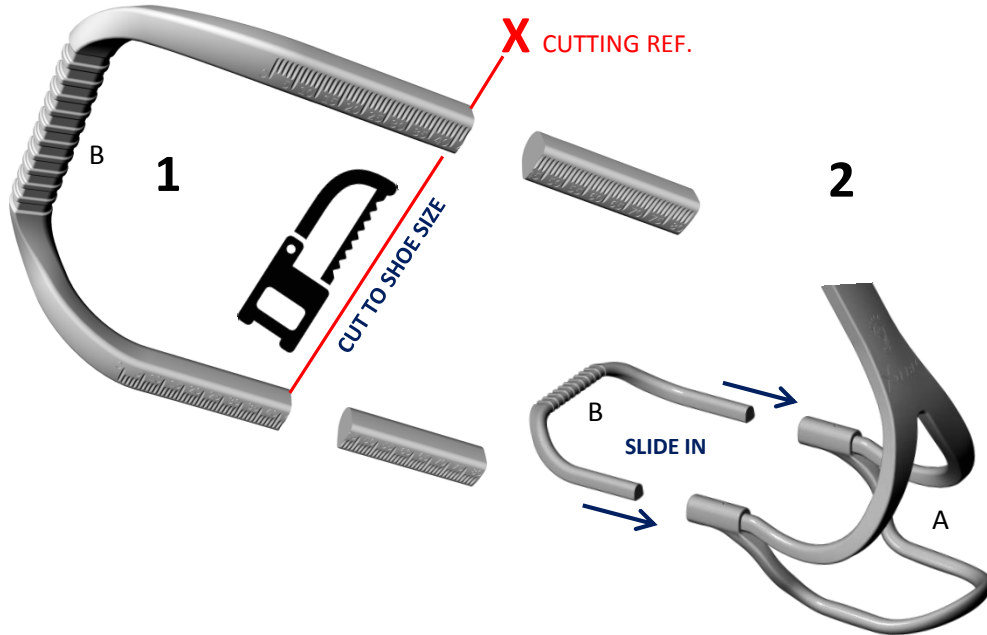
SAFETY GOGGLES, GLOVES, DUST MASK
& ALL OTHER PROTECTION REQUIRED BY
YOUR HEALTH & SAFETY WORK POLICY

PARTS LIST - XTERN ORTHOTIC KIT, SIZE LARGE / MEDIUM

Item	Qty	PRODUCT CODE	DESCRIPTION
A	1	200000-BA0-L	MAIN BRACE BODY ASSEMBLY, SIZE LARGE
		200000-BA0-M	MAIN BRACE BODY ASSEMBLY, SIZE MEDIUM
B	1	200000-U00-ML	FRONT SHOE SECTION «U» SHAPE, SIZE MEDIUM-LARGE
C	1	200000-C00-ML	CALF SECTION, SIZE MEDIUM-LARGE
D	5	200000-L00-ML	LACE CLIP ATTACHMENT, SIZE MEDIUM-LARGE
E	3	700000-SET-002	SET SCREW 5-40 X 1/2" LONG. 18-8 STAINLESS STEEL
F	1	500301-K00-SML	COMPLETE STRAP & CUSHIONS KIT
G	20	700000-ZZZ-001	TIE-WRAP BLACK 18 LBS/4" LONG
H	1	700000-HEX-001	HEX-L-KEY 1/16" (FOR 5-40 SET SCREW)

US SHOE SIZE	MEDIUM-CUTTING CHART										LARGE - CUTTING CHART								
	MEN	7.5	8	8.5	9	9.5	10	10.5	11	11.5	12	12.5	13	13.5	14	14.5	15	15.5	16
WOMEN	8.5	9	9.5	10	10.5	11	11.5	///	///	///	///	///	///	///	///	///	///	///	///
X CUTTING REF.	22	25	29	31	34	37	40	43	46	50	53	57	60	65	69	73	77	79	

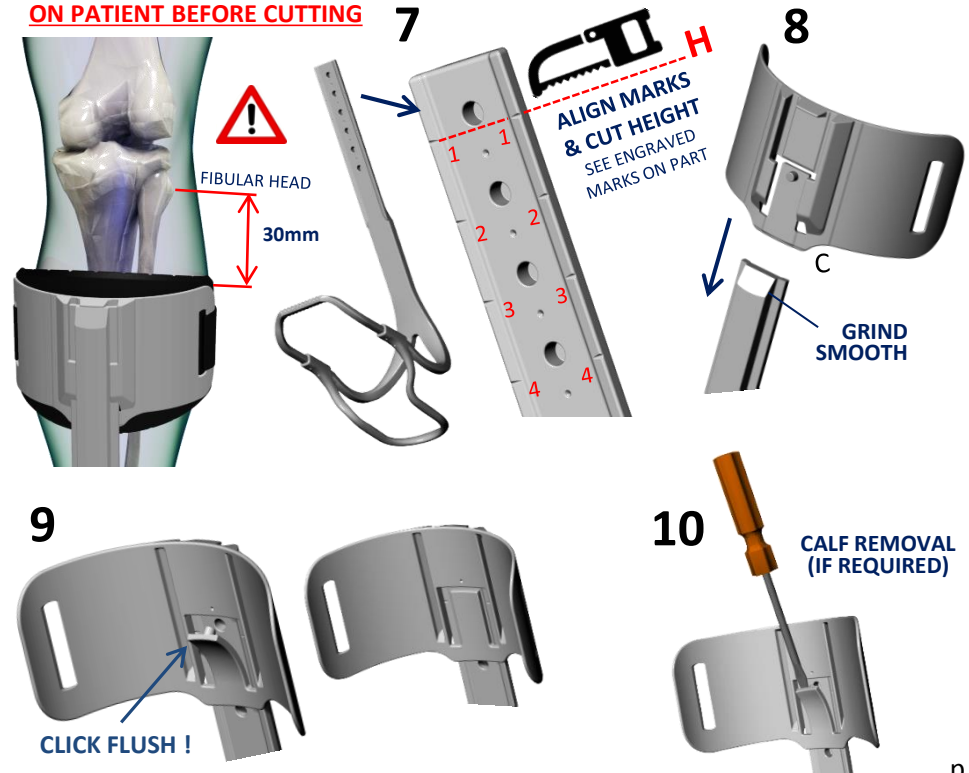
SEE GRADUATIONS ENCARVED UNDER FRONT "U" SECTION



US SHOE SIZE	MEDIUM-CALF HEIGHT										LARGE-CALF HEIGHT								
	MEN	7.5	8	8.5	9	9.5	10	10.5	11	11.5	12	12.5	13	13.5	14	14.5	15	15.5	16
WOMEN	8.5	9	9.5	10	10.5	11	11.5	///	///	///	///	///	///	///	///	///	///	///	///
H CUTTING REF.	3	3	3	3	2	2	2	2	2	2	1	1	1	1	1	1	1	FULL	FULL

SUGGESTED CUTTING CHART - SEE NUMBERS MARKS ON PART

VERIFY CALF BAND POSITION ON PATIENT BEFORE CUTTING



US SHOE SIZE	MEDIUM-MEASUREMENT										LARGE - MEASUREMENT								
	MEN	7.5	8	8.5	9	9.5	10	10.5	11	11.5	12	12.5	13	13.5	14	14.5	15	15.5	16
WOMEN	8.5	9	9.5	10	10.5	11	11.5	///	///	///	///	///	///	///	///	///	///	///	///
L (mm)	196	199	203	205	208	211	214	217	220	223	226	230	233	237	241	244	248	252	

