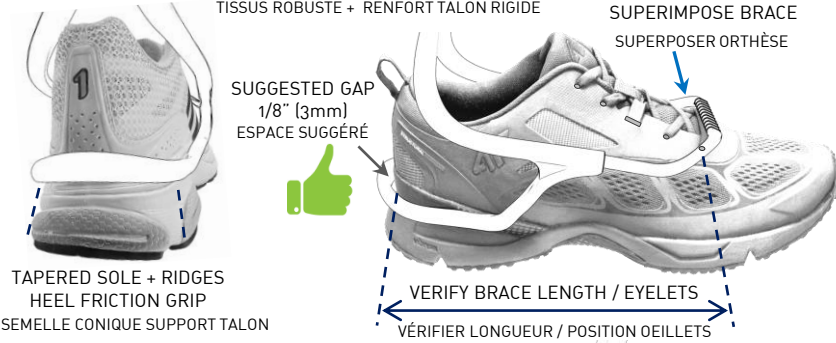


**-1- SHOE RECOMMENDATIONS
RECOMMANDATIONS SOULIERS**

ROBUST FABRIC + FIRM HEELCUP
TISSUS ROBUSTE + RENFORT TALON RIGIDE

SUPERIMPOSE BRACE
SUPERPOSER ORTHÈSE

SUGGESTED GAP
1/8" (3mm)
ESPACE SUGGÉRÉ



TAPERED SOLE + RIDGES
HEEL FRICTION GRIP
SEMELLE CONIQUE SUPPORT TALON

VERIFY BRACE LENGTH / EYELETS
VÉRIFIER LONGUEUR / POSITION OEUILLETS

MAXIMUM
10-12mm (3/8" - 1/2")

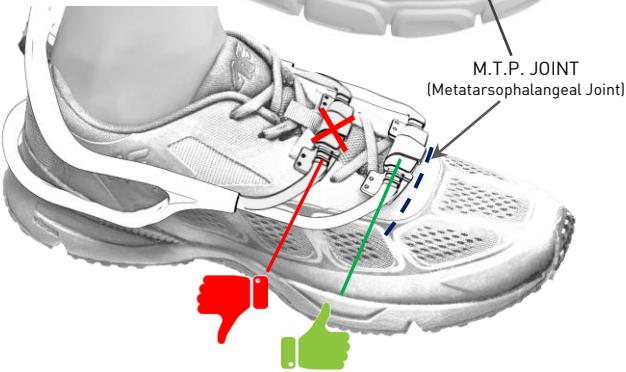
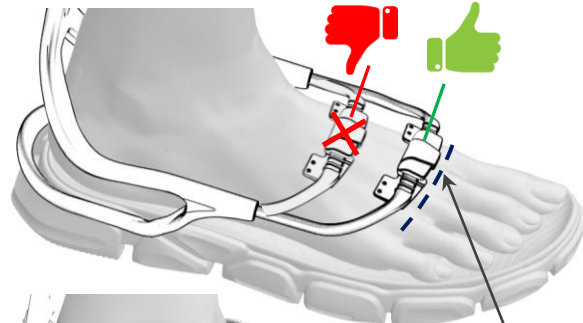


MORE THAN
20mm (3/4")



AVOID MINIMALIST SHOES WITH VERY LIGHT FABRIC AND THIN SOLE.
ÉVITER SOULIER MINIMALISTE TISSUS TRÈS LÉGER ET SEMELLE MINCE.

**-2- ANATOMICAL LOCATION FRONT "U" / LACE CLIP
POSITION ANATOMIQUE "U" AVANT / CLIP-LACET**

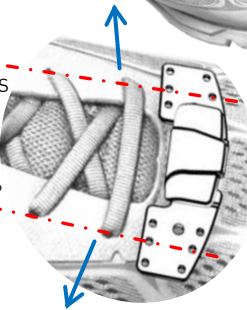


M.T.P. JOINT
(Metatarsophalangeal Joint)

-3-

FULLY EXPAND
SHOE EYELETS
SELECT CLIP HOLES

ÉTIRER OEUILLETS
CHAUSSURE
CHOISIR TROUS CLIP



MARK
MAXIMUM
EYELETS
WIDTH
MARQUER
LARGEUR
MAXIMAL
OEUILLETS

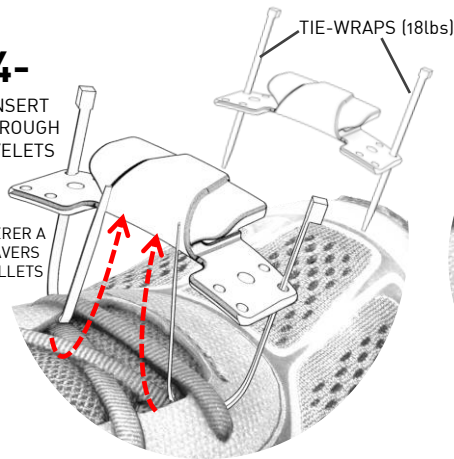
SUPERIMPOSE LACE CLIP
SUPERPOSER LE CLIP



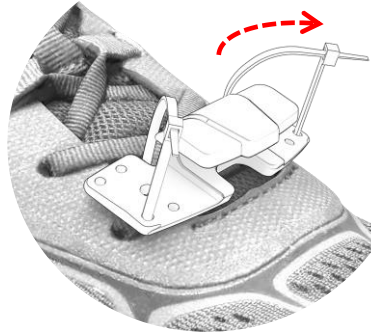
-4-

INSERT
THROUGH
EYELETS

INSÉRER A
TRAVERS
OEUILLETS

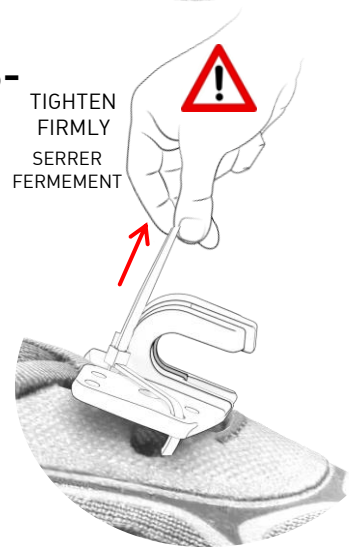


-5-



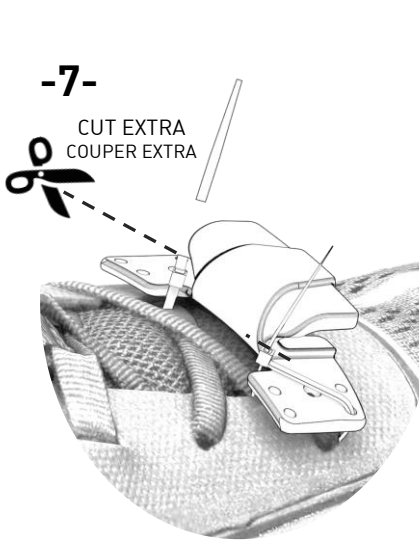
-6-

TIGHTEN
FIRMLY
SERRER
FERMEMENT



-7-

CUT EXTRA
COUPER EXTRA



-8-

HEEL UP
TALON RELEVÉ



PLACE FRONT
OF ORTHOTIC
PLACER LE DEVANT
DE L'ORTHÈSE

INSERT
INSÉRÉ

-9-

LOWER HEEL
ABAISSE
LE TALON



-10-



1-ENFILER LA CHAUSSURE.

1-DON THE SHOE.

2-ATTACHER LA COURROIE MOLLET/TIBIA.

2-SECURE THE CALF/SHIN STRAP.

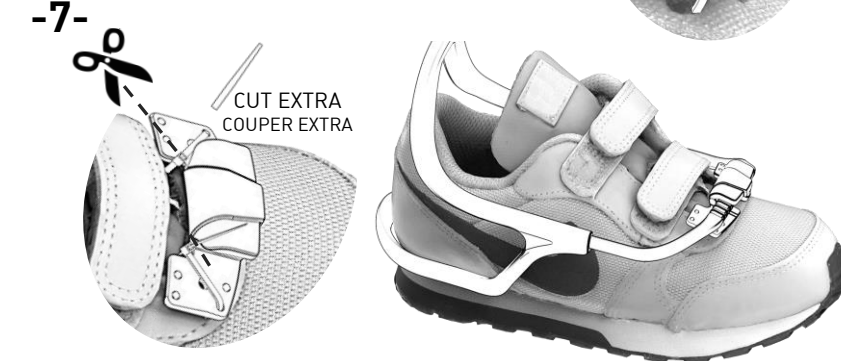
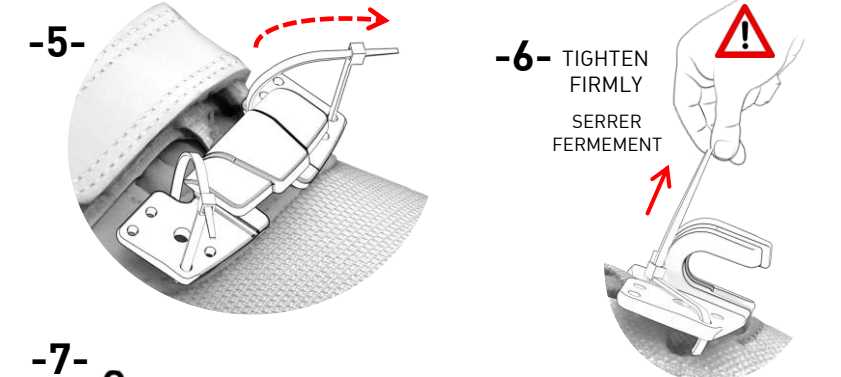
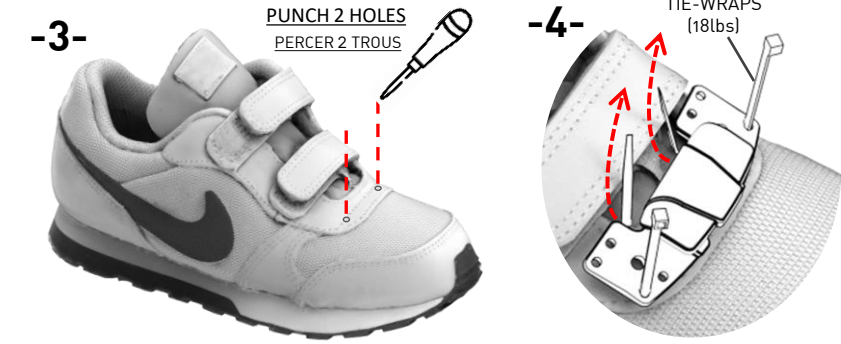
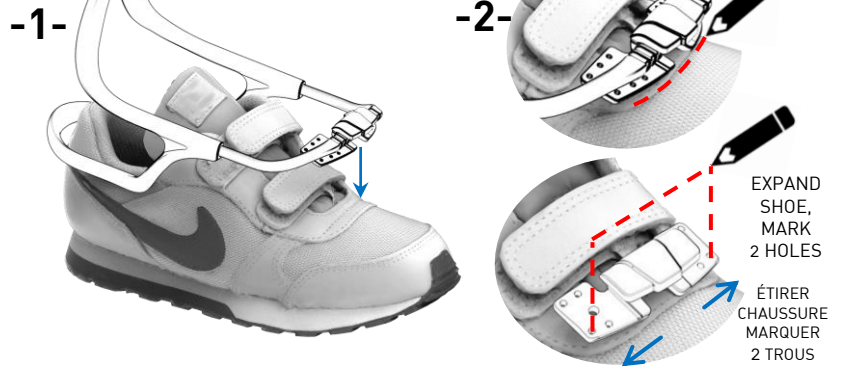
3-SERRER LES LACETS: LACER SERRÉ
AUTOUR DE LA CHEVILLE POUR BIEN
SECURISER LE PIED DANS LE SOULIER.
GARDER LES LACETS DÉTENDUES PRÈS
DU CLIP-LACET.

3-TIGHTEN LACES: LACE TIGHT AROUND
ANKLE TO SECURE FOOT PROPERLY.
KEEP LACES LOOSE NEAR LACE CLIP.

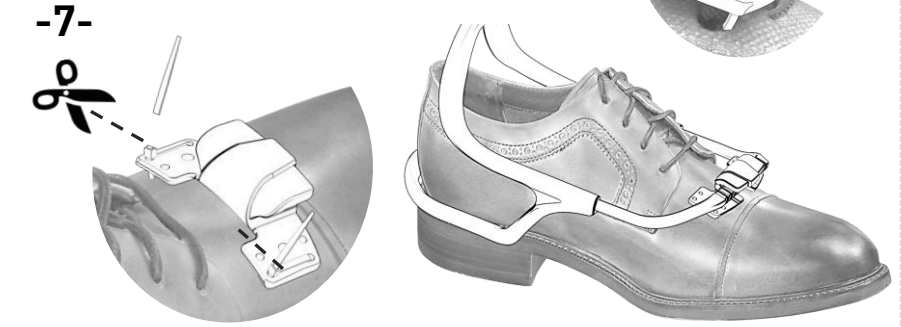
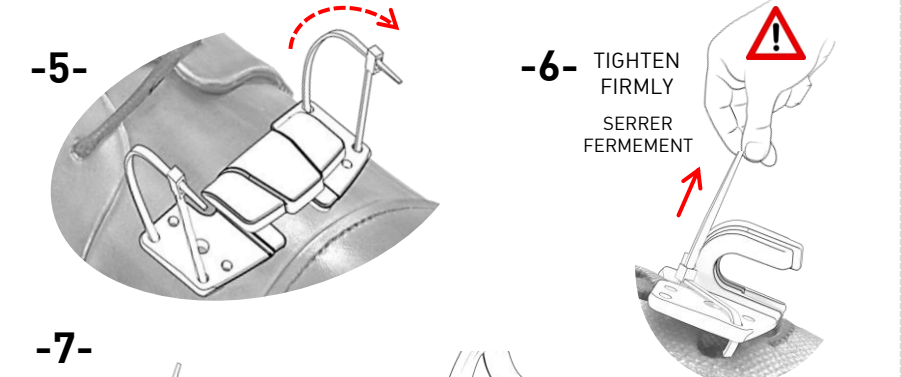
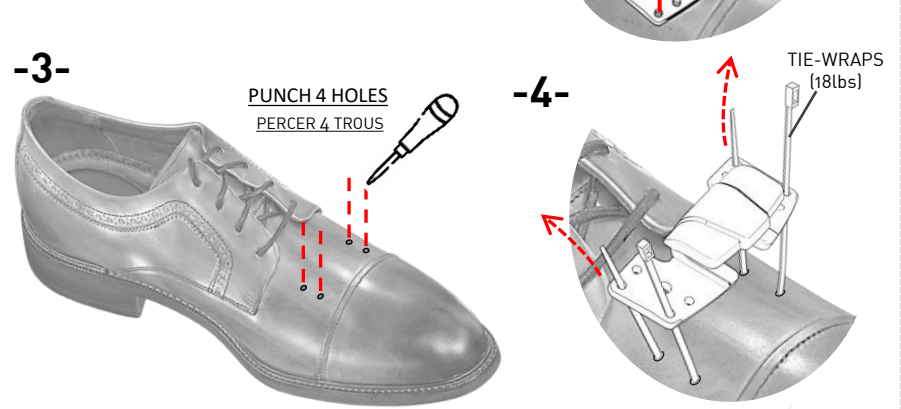
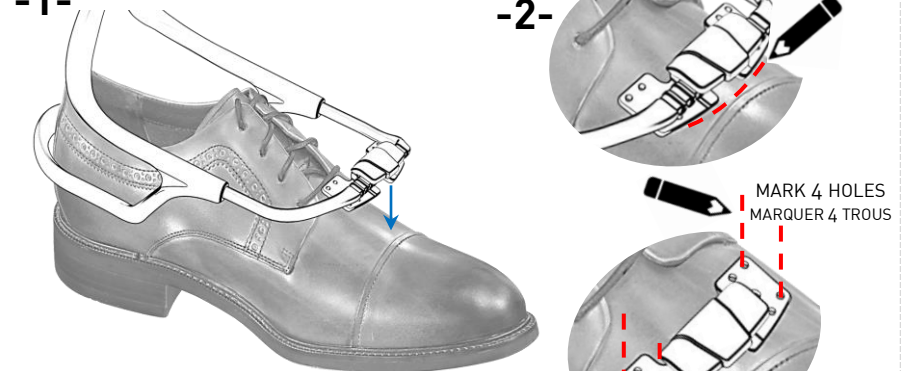
4-VOUS ETES PRET POUR L ACTION!

4-YOU'RE READY FOR ACTION!

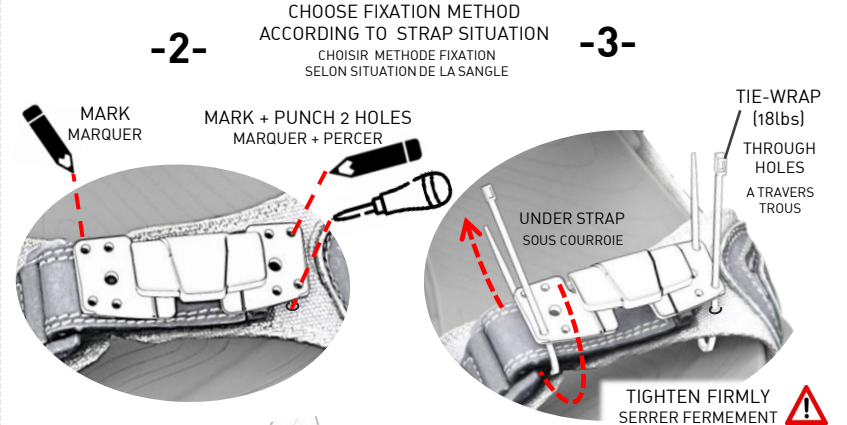
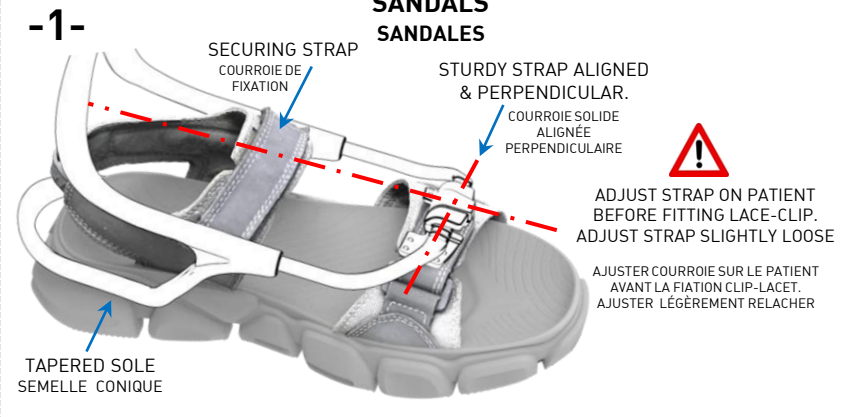
**VELCRO SHOES
SOULIERS À VELCRO**



**DRESS SHOES
SOULIERS HABILÉS**



**SANDALS
SANDALES**



IF EYELETS ARE VERY LONG, PUNCH HOLES AT THE BASE OF EYELETS.
SI LES OEILLETS SONT TRÈS LONG, PERCER DES TROUS À LA BASE DES OEILLETS.